




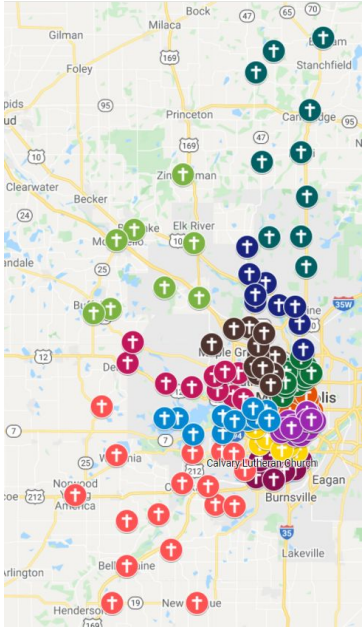
Two Banks of the Same River

Why Indigenous Rights & Climate Justice are Intertwined



What body of water
has had a profound
role in your life?

EcoFaith Network



Where we've been ... teaching about Watersheds



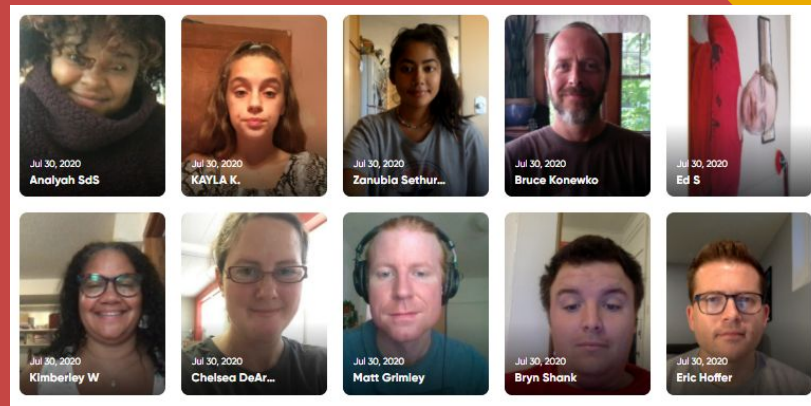
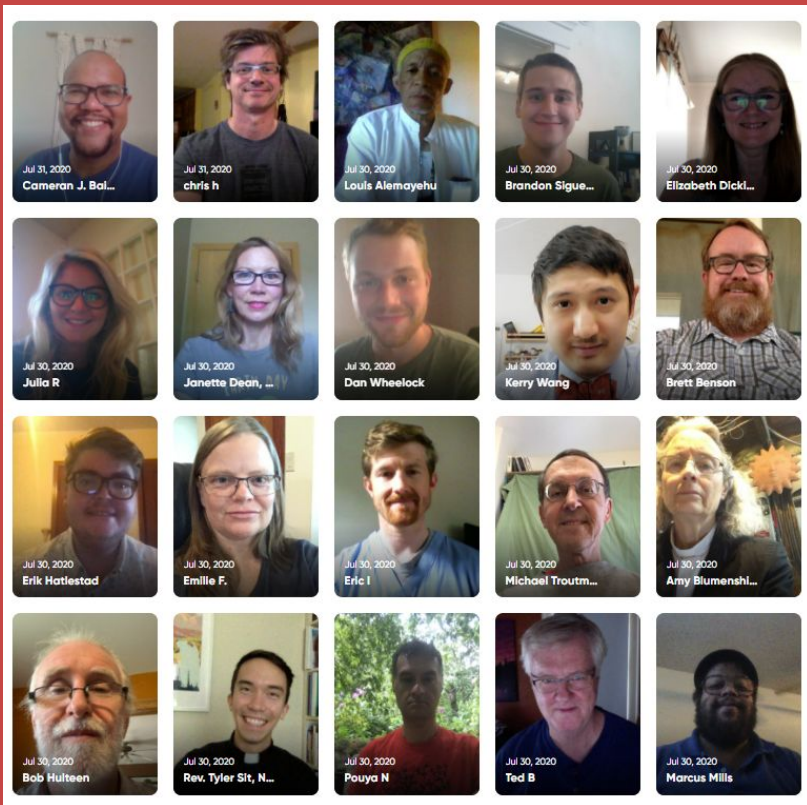
Where we've been ... in church basements!



Where we've been ... testifying at Minneapolis City Hall



Where we've been ... at the Public Utilities Commission



Where Are We Headed?



MVEC

MINNESOTA VALLEY ELECTRIC COOPERATIVE

A Touchstone Energy® Cooperative



DAKOTA® ELECTRIC

ASSOCIATION

Your Touchstone Energy® Cooperative

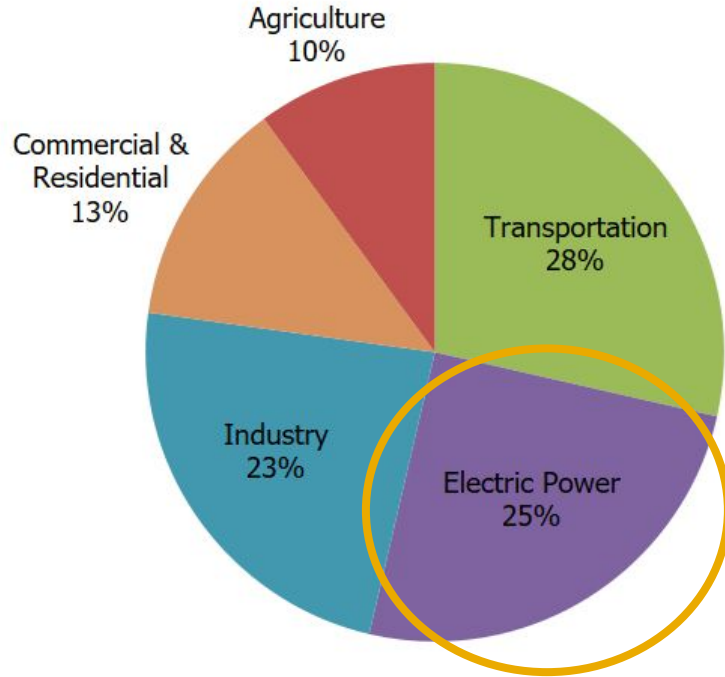


Impacts of the Climate Crisis

- Heatwaves & Severe Weather
 - Increased need for home cooling
- Air Pollution
 - Asthma & other respiratory illnesses
- Moose, Maples, & Wild Rice
- Mosquito-borne Infectious Diseases
- Beetles & Borers
- Invasive Species



How do we care for our neighbors?



Total U.S. Greenhouse Gas Emissions by Economic Sector in 2021

EPA:


<https://www.epa.gov/ghgemissions/sources-greenhouse-gas-emissions>

Energy Efficiency

→ The cheapest clean energy is the energy you don't use

→ Climate intersects with public health and housing in residential energy use





How Have Colonialism and the
Dispossession of Native Lands
Contributed to the Climate Crisis?

The Doctrine of Discovery

Papal Bull "Inter Caetera," issued by Pope Alexander VI on May 4, 1493

- any land not inhabited by Christians was available to be "discovered," claimed, and exploited
- "...that barbarous nations be overthrown and brought to the faith itself."

In the US - 1823 Supreme Court Ruling

- "that the principle of discovery gave European nations an absolute right to New World lands"



Scripture has some things to say...

Deut. 19:14 - You must not move your neighbor's boundary marker...

Proverbs 22:28 - Do not remove the ancient landmark that your ancestors set up.

Prov. 23:10-11- Do not remove an ancient landmark or encroach on the fields of orphans, for their redeemer is strong; he will plead their cause against you.

Repudiation

The ELCA's social policy resolution "Repudiation of the Doctrine of Discovery" explains the church's commitment to repudiation with the following pledges:

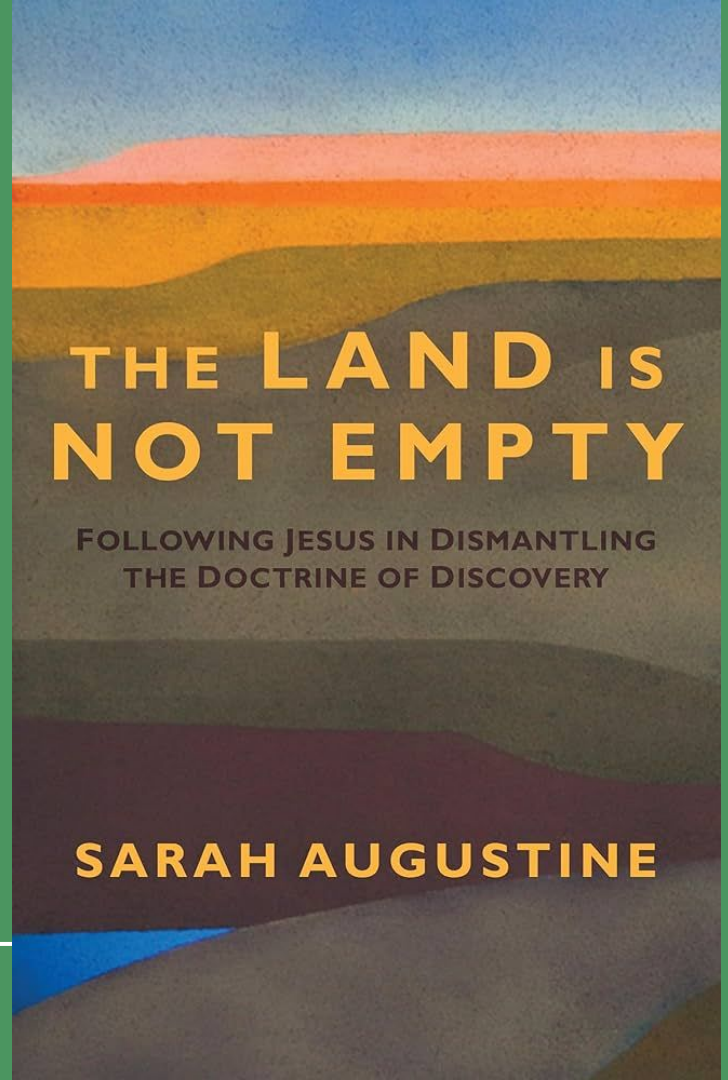
"To acknowledge and repent from this church's complicity in the evils of colonialism in the Americas, which continue to harm tribal governments and individual tribal members."

"To affirm that this church will eliminate the doctrine of discovery from its contemporary rhetoric and programs, **electing to practice accompaniment with** native peoples instead of a missionary endeavor **to** them, allowing these partnerships to mutually enrich communities and the ministries of the ELCA."



The Land is Not Empty

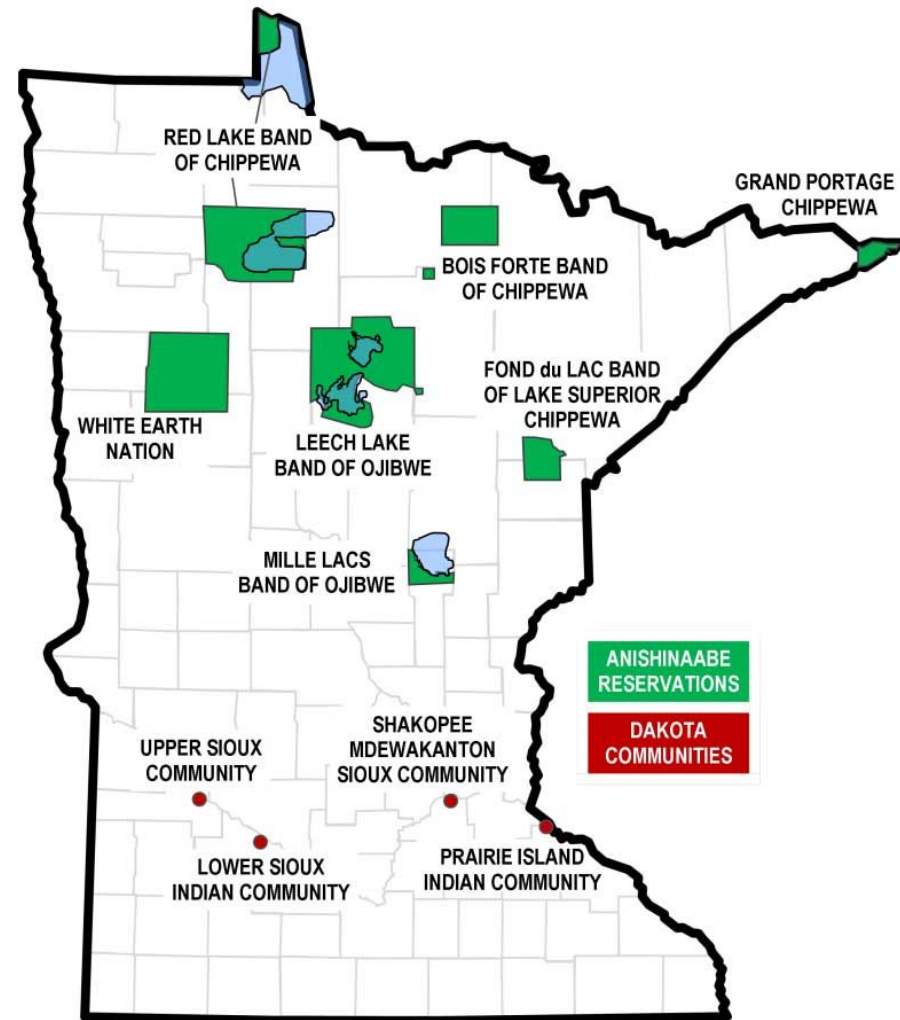
Robin Wall Kimmerer



Minnesota's Native Tribes

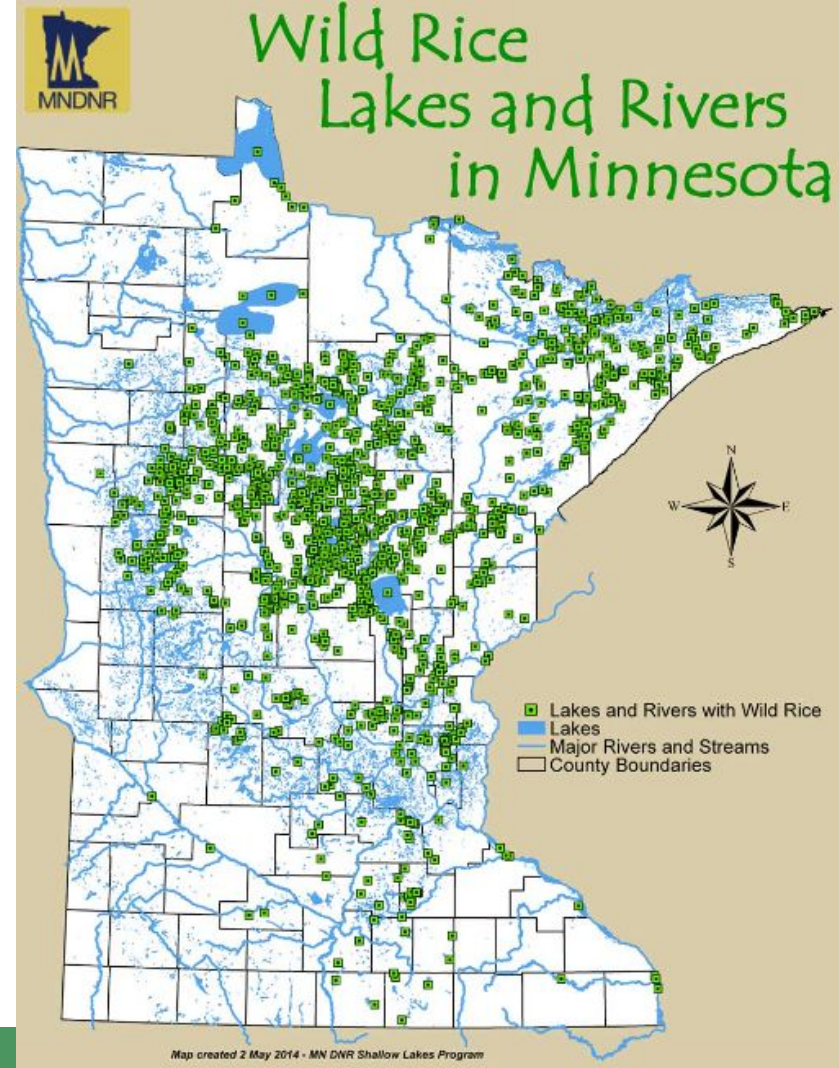
Seven Anishinaabe Reservations

Four Dakota Communities



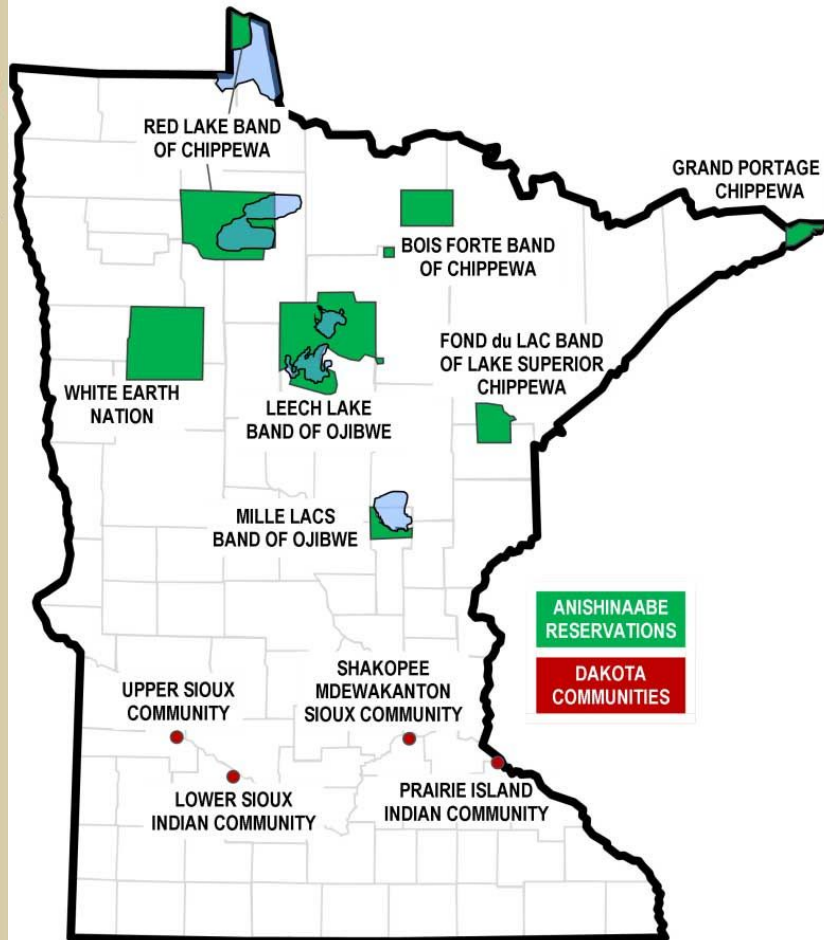
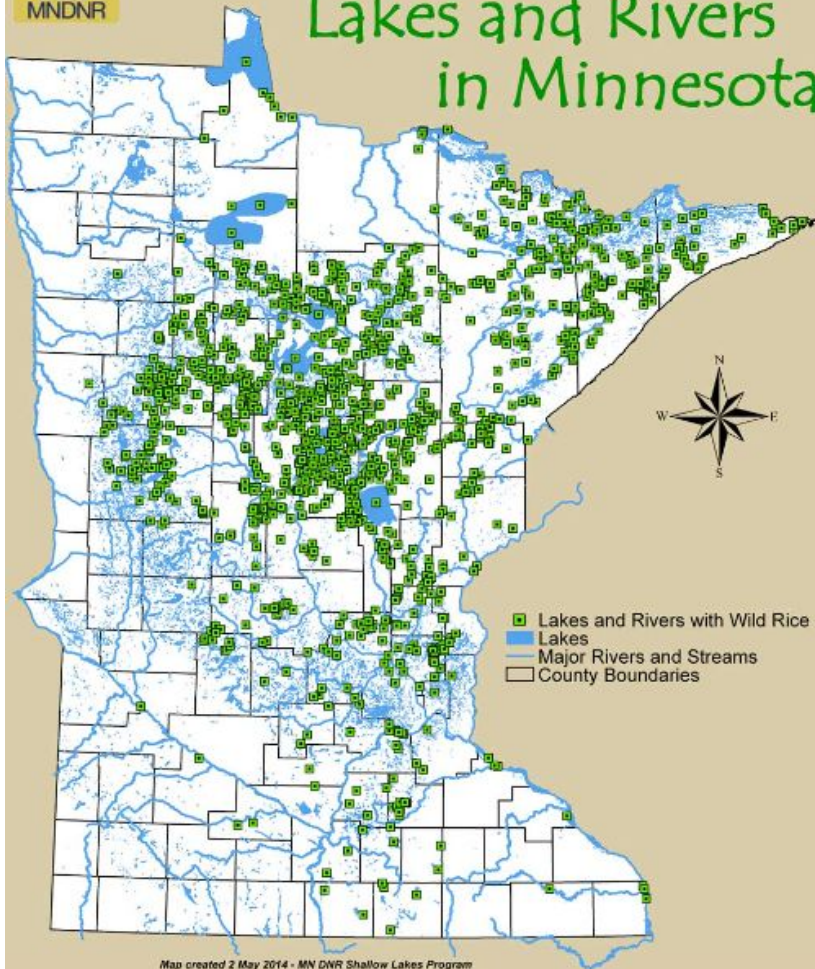
Importance of Manoomin/Psin to Minnesota


- Minnesota has more wild rice than any other state in the country.
- Manoomin is a super-food that can be grown using no pesticides or fertilizers all it needs is clean water to thrive.
- Manoomin/psin was historically found in the southern part of the state and was a part of dakota culture. Due to pollution and other factors it is no longer able to thrive in the areas it once did
- More than 17 species of wildlife listed in the MNDNR Comprehensive Wildlife Conservation Strategy as “species of greatest conservation need” use wild rice lakes as habitat for reproduction or foraging.





Wild Rice Lakes and Rivers in Minnesota

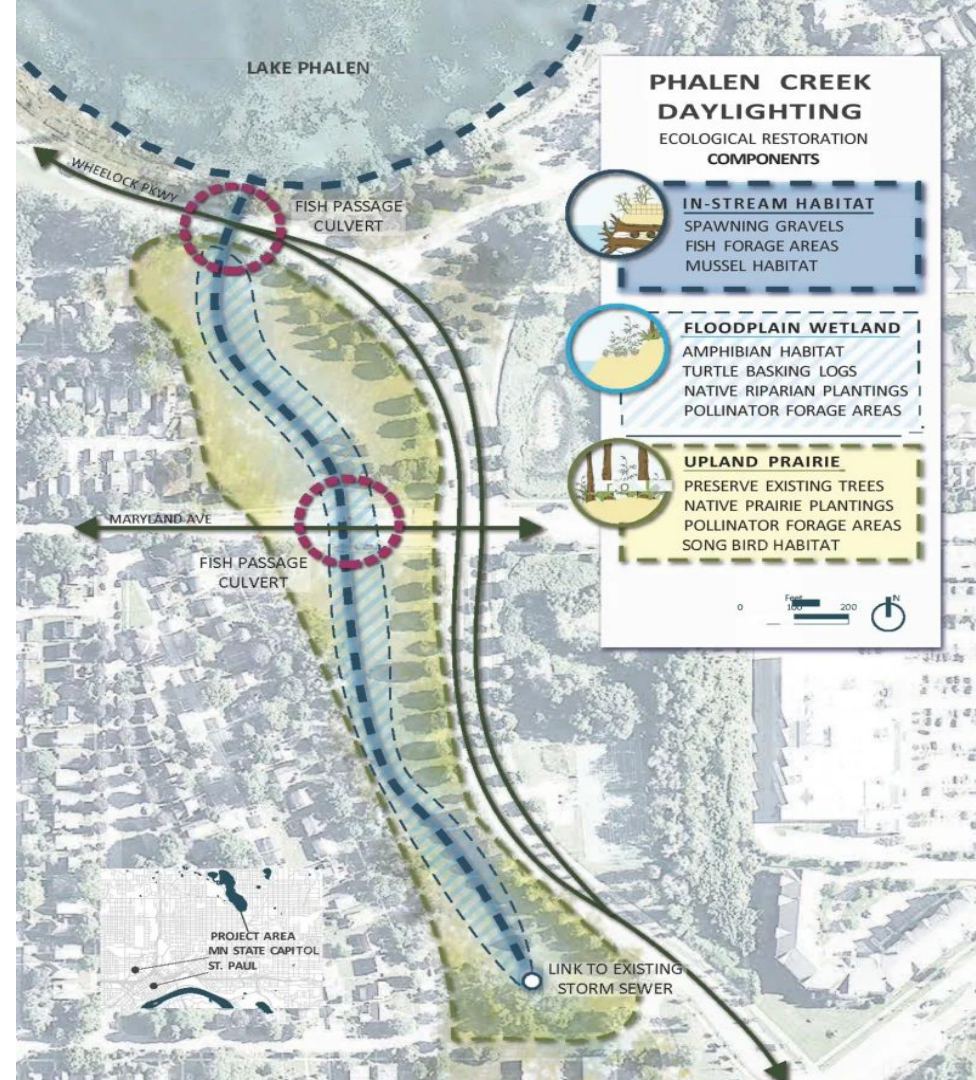




How can Indigenous knowledge and traditional practices contribute to addressing climate change?

Wakan Tipi Awanyankapi

“Those Who Take Care of
Dwelling Place of the Sacred”



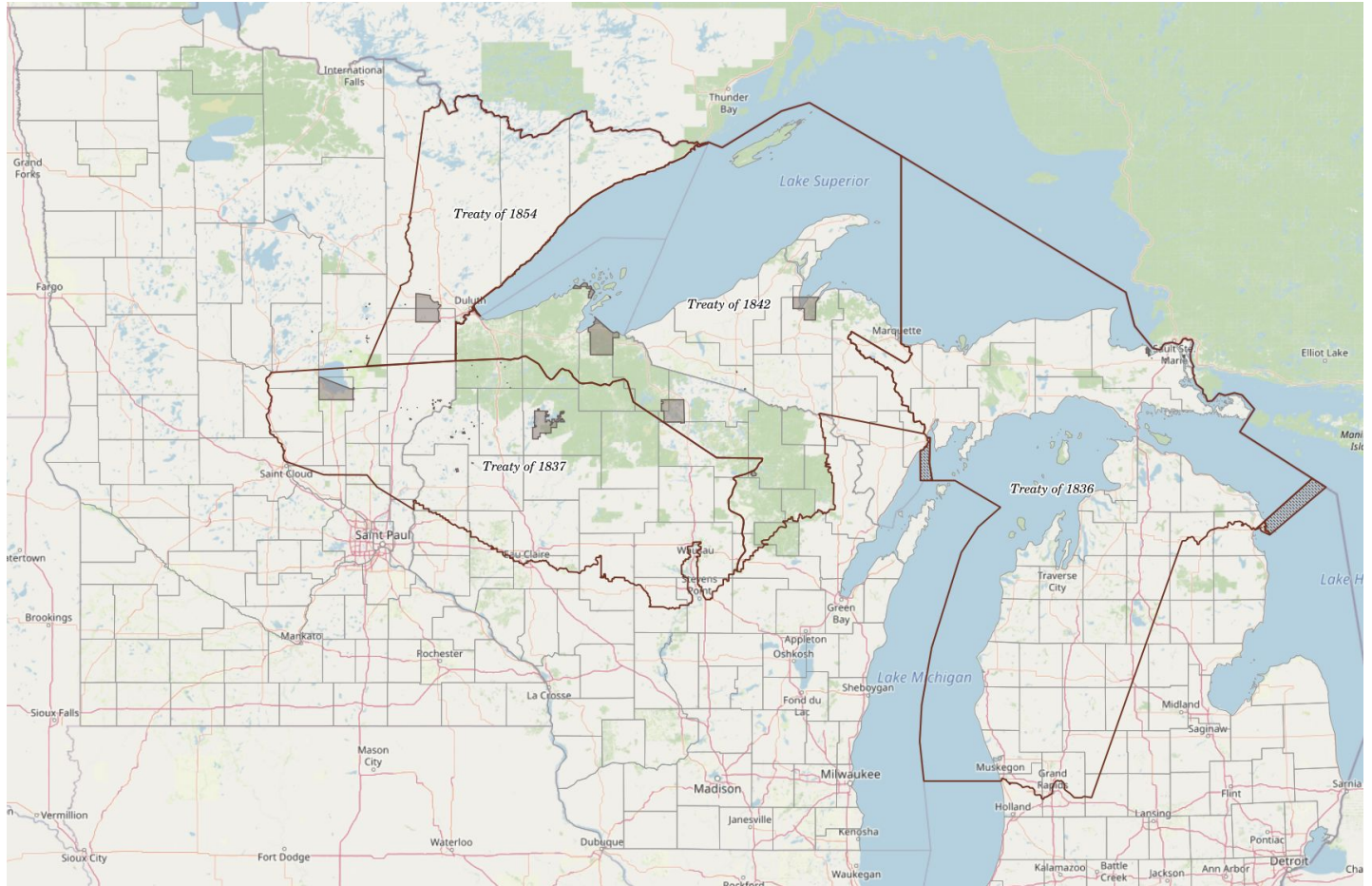
Four Sisters Farmers Market

& Other Indigenous Food
Sovereignty Projects



GLIFWC

(Great
Lakes
Indian
Fish &
Wildlife
Comm.)



Braiding Sweetgrass

Robin Wall Kimmerer



BRAIDING SWEETGRASS

INDIGENOUS WISDOM, SCIENTIFIC KNOWLEDGE,
and the TEACHINGS of PLANTS

ROBIN WALL KIMMERER



So...

What now?

An Offering of Postcards

Resolution for the Rights of Manoomin/Psínj

~ This resolution aims to recognize the rights of Manoomin/Psínj to exist, flourish, and regenerate.

HF 4304 / SF 3480 ~ White Earth State Forest lands returned

HF 4193 / SF 3986 ~ U of M Forestry Land to Fond du Lac

HF 4780 / SF 5080 ~ Upper Red Lake Return

HF 5121 / SF 5162 ~ DNR requested Mille Lacs Land Return